

State of Wyoming Corner Record

(In compliance with the CORNER PERPETUATION AND FILING ACT, Wyoming Statutes, 1997 Section 33-29-140 et. seq., and the Rules and Regulations of the Board of Professional Engineers and Professional Land Surveyors)

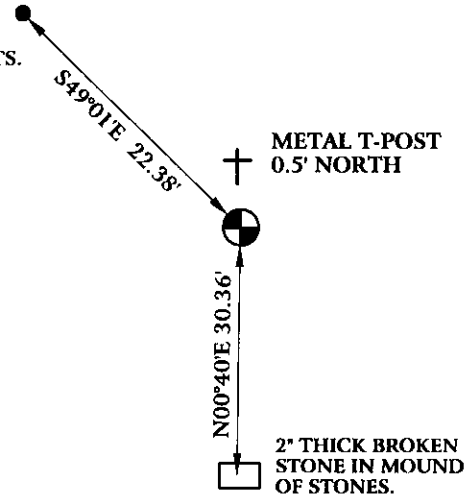
Reverse side of this form may be used if more space is needed.

Record of original survey and citation of source of historical information (if corner is lost or obliterated). Description of corner monumentation evidence found and/or monument and accessories established to perpetuate the location of this corner. Sketch of relative location of monument, accessories, and reference points with course and distance to adjacent corner(s) (if determined in this survey). Method and rationale for reestablishment of lost or obliterated corner.

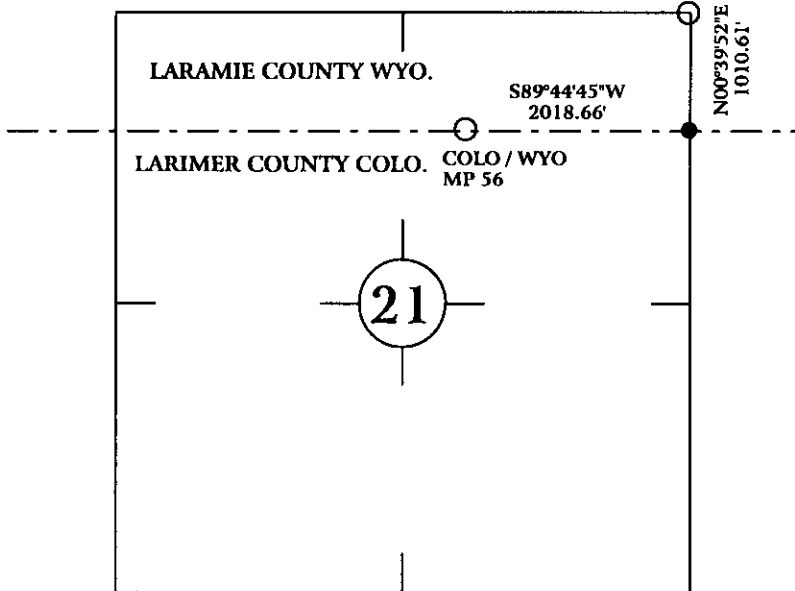
ORIGINAL CALL FOR 25" X 14" X 4" SANDSTONE 18" DEEP W/ 3 NOTCHES ON EAST FACE, 3 NOTCHES ON WEST FACE, & CC ON NORTH FACE.

FOUND 2" THICK BROKEN STONE 6" EXPOSED IN MOUND OF STONES, NO VISIBLE MARKINGS. ACCEPTED MONUMENT FOR LINE AND SET 3/4" X 30" REBAR WITH 3 1/4" ALUMINUM CAP WYO. P.L.S. 6099, COLO. P.L.S. 23519 AT INTERSECTION OF SECTION LINE & STATE LINE, AND SET TIES AS SHOWN BELOW.

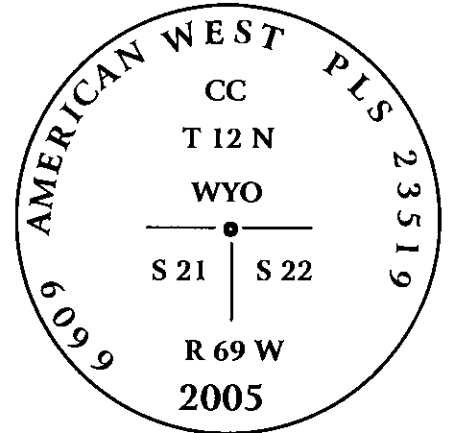
SET 5/8" X 24" REBAR W/
1 1/2" ALUMINUM CAP
NEXT TO REMAINS OF
OLD FENCE BRACE POSTS.



Monument location



Monument Inscription



3 1/4" ALUMINUM CAP
ON 3/4" X 30" REBAR.

Date of Field Work: May 26, 2005

Office Reference: GALLEGOS05.pro

Cross Index Plat

1	2	3	4	5	6	7	8	9	10	11	12	13	14	15	16	17	18	19	20	21	22	23	24	25	
A																									A
B																									B
C	6	5	4	3	2	1																			C
D																									D
E																									E
F																									F
G	7	8	9	10	11	12																			G
H																									H
I																									I
J																									J
K																									K
L	18	17	16	15	14	13																			L
M																									M
N																									N
O																									O
P	19	20	21	22	23	24																			P
Q																									Q
R																									R
S																									S
T	30	29	28	27	26	25																			T
U																									U
V																									V
W																									W
X	31	32	33	34	35	36																			X
Y																									Y
Z																									Z

Firm/Agency, Address

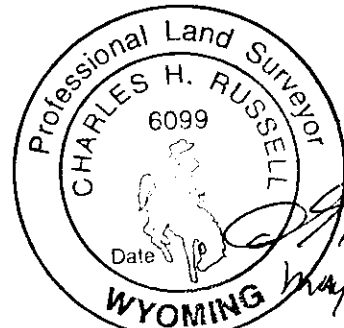
CHARLES H. RUSSELL P.L.S. 6099
AMERICAN WEST LAND SURVEYING CO.
29 SOUTH 4TH AVENUE
BRIGHTON, CO 80601

This corner record was prepared
by me or under my direction
and supervision.

SEAL & SIGNATURE

Telephone Number:

303-659-1532



RECORDED 6/22/2005 AT 12:36 PM REC# 420240 BK# 1888 PG# 1110
DEBRA K. LATHROP, CLERK OF LARAMIE COUNTY, WY PAGE 1 OF 1

Corner Name: Closing Corner to SectionS 21 & 22, T 12 N, R 69 W, 6th P.M.

Cross-Index No.: N.9-13

County: Laramie Wyoming

SBRPEPLS/PLSW: March 1994; PLSW January 1998